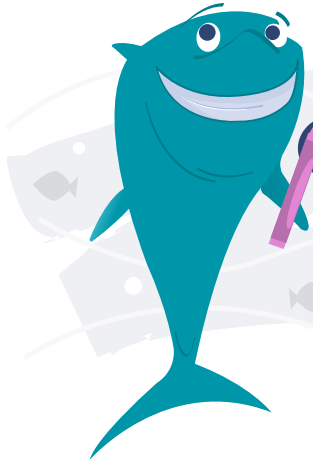


# 1

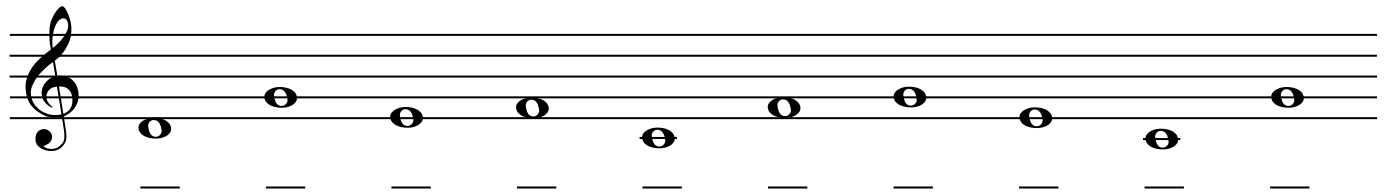
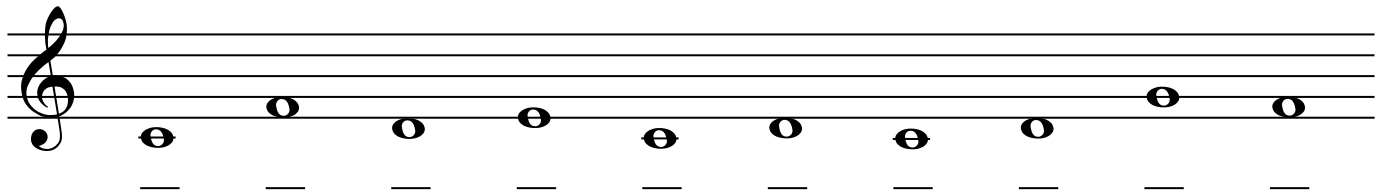
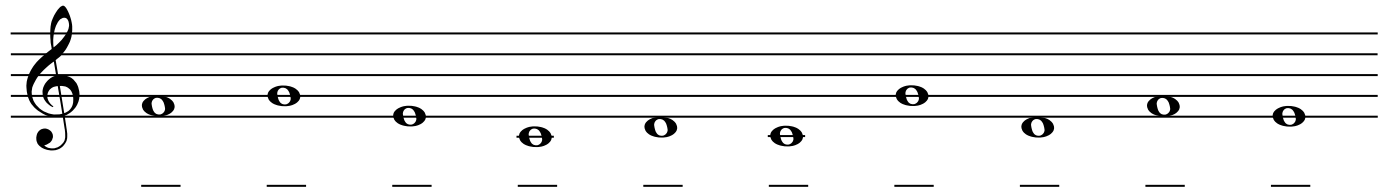
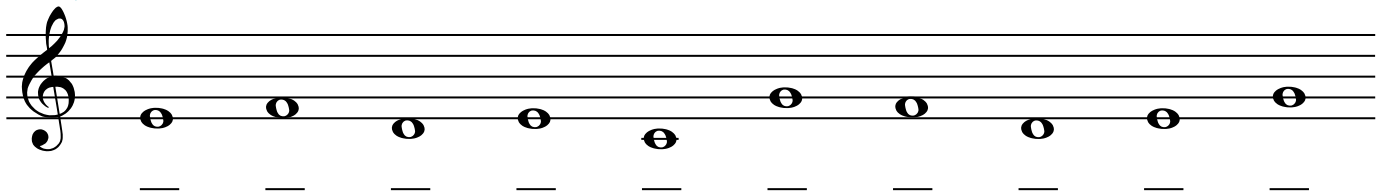
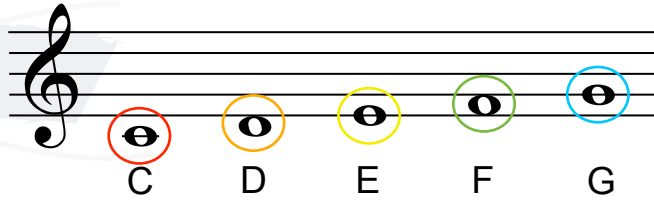
## About This Activity

Grab your crayons and color your way to success! Complete this worksheet by first choosing 5 crayons. Color each of the first 5 whole notes with a different color. Then complete this worksheet by naming each note correctly, and by coloring each note the same color as it was colored at the top of the worksheet. Example: Each C is blue, each D is red, etc.

Treble Clef (G Clef)/C Position



## COLOR THAT NOTE!

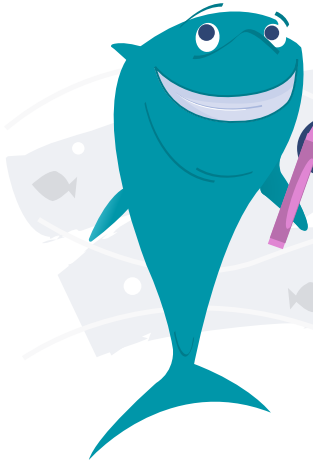


# 2

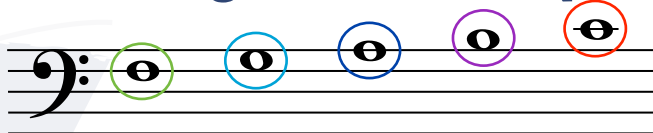
## About This Activity

Grab your crayons and color your way to success! Complete this worksheet by first choosing 5 crayons. Color each of the first 5 whole notes with a different color. Then complete this worksheet by naming each note correctly, and by coloring each note the same color as it was colored at the top of the worksheet. Example: Each C is blue, each D is red, etc.

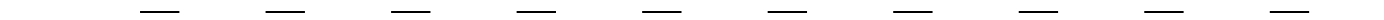
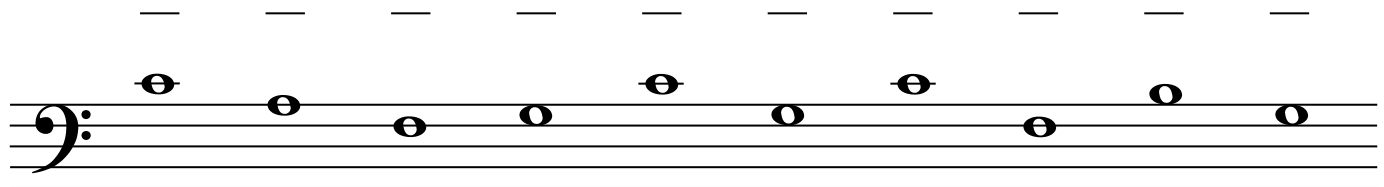
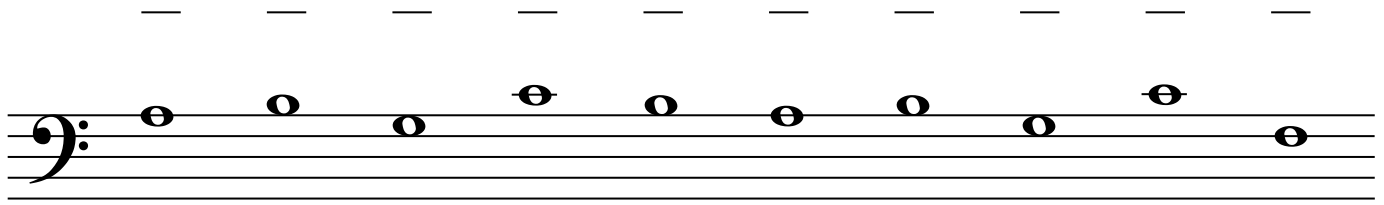
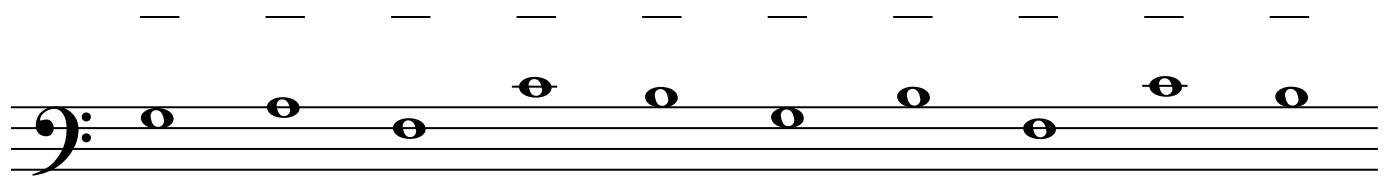
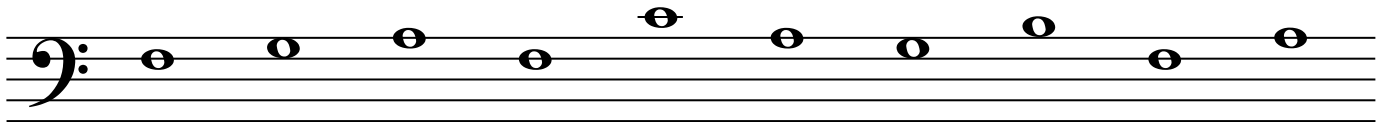
Bass Clef (F Clef)/Middle C Position



# COLOR THAT NOTE!



F G A B C

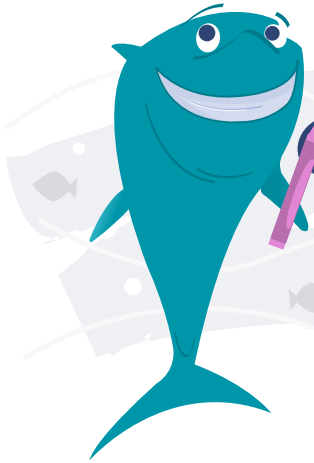


# 3

## About This Activity

Grab your crayons and color your way to success! Complete this worksheet by first choosing 5 crayons. Color each of the first 5 whole notes with a different color. Then complete this worksheet by naming each note correctly, and by coloring each note the same color as it was colored at the top of the worksheet. Example: Each C is blue, each D is red, etc.

Bass Clef (F Clef)/C Position



## COLOR THAT NOTE!

A musical staff in bass clef (F clef) with five whole notes. The notes are circled in different colors: red, orange, yellow, green, and blue. Below the staff, the letters C, D, E, F, and G are printed under their respective notes.

C D E F G

A musical staff in bass clef (F clef) with ten whole notes. The notes are not colored, intended for the student to color them according to the example above.

— — — — — — — — — —

A musical staff in bass clef (F clef) with ten whole notes. The notes are not colored, intended for the student to color them according to the example above.

— — — — — — — — — —

A musical staff in bass clef (F clef) with ten whole notes. The notes are not colored, intended for the student to color them according to the example above.

— — — — — — — — — —

A musical staff in bass clef (F clef) with ten whole notes. The notes are not colored, intended for the student to color them according to the example above.

— — — — — — — — — —

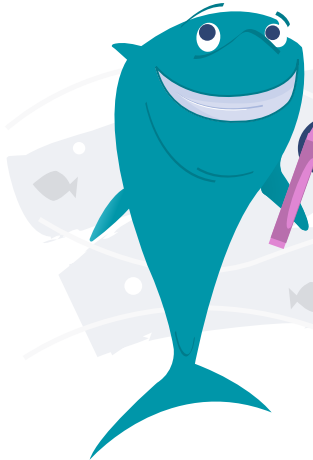


# 4

## About This Activity

Grab your crayons and color your way to success! Complete this worksheet by first choosing 5 crayons. Color each of the first 5 whole notes with a different color. Then complete this worksheet by naming each note correctly, and by coloring each note the same color as it was colored at the top of the worksheet. Example: Each C is blue, each D is red, etc.

Treble Clef (G Clef)/C5-G5



## COLOR THAT NOTE!

A musical staff in treble clef with five whole notes. The notes are on the first, second, third, fourth, and fifth lines of the staff. Each note is circled in a different color: red, orange, yellow, green, and blue. Below the staff are the letters C, D, E, F, and G.

A musical staff in treble clef with ten whole notes. The notes are on the first, second, third, fourth, and fifth lines of the staff, with two notes on each line. The staff is empty for coloring.

— — — — — — — — — —

A musical staff in treble clef with ten whole notes. The notes are on the first, second, third, fourth, and fifth lines of the staff, with two notes on each line. The staff is empty for coloring.

— — — — — — — — — —

A musical staff in treble clef with ten whole notes. The notes are on the first, second, third, fourth, and fifth lines of the staff, with two notes on each line. The staff is empty for coloring.

— — — — — — — — — —

A musical staff in treble clef with ten whole notes. The notes are on the first, second, third, fourth, and fifth lines of the staff, with two notes on each line. The staff is empty for coloring.

— — — — — — — — — —

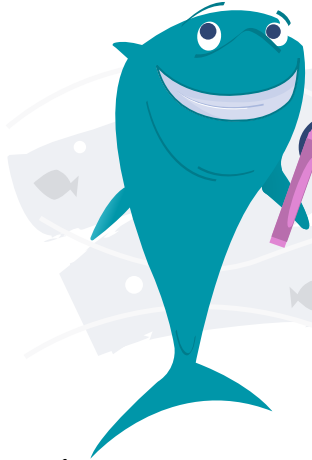


# 5

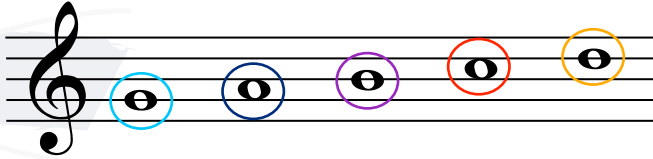
## About This Activity

Grab your crayons and color your way to success! Complete this worksheet by first choosing 5 crayons. Color each of the first 5 whole notes with a different color. Then complete this worksheet by naming each note correctly, and by coloring each note the same color as it was colored at the top of the worksheet. Example: Each C is blue, each D is red, etc.

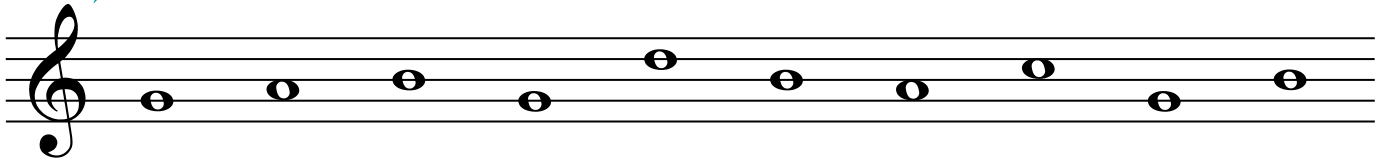
Treble Clef (G Clef)/G Position



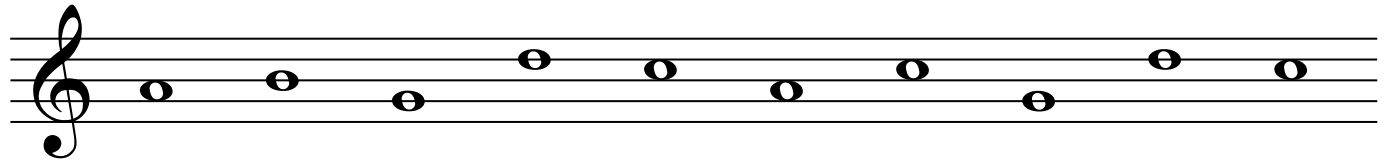
## COLOR THAT NOTE!



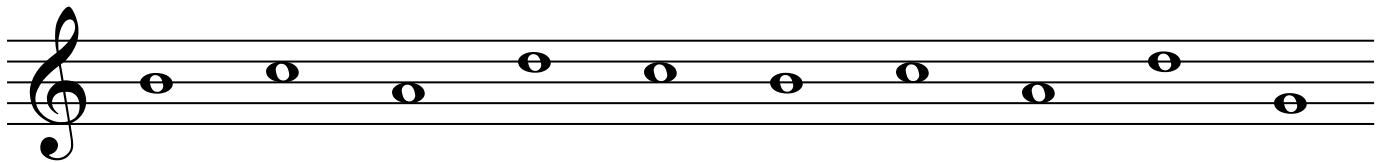
G A B C D



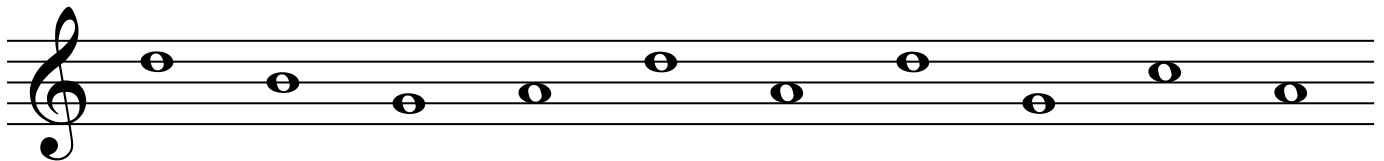
— — — — — — — — —



— — — — — — — — —



— — — — — — — — —



— — — — — — — — —

