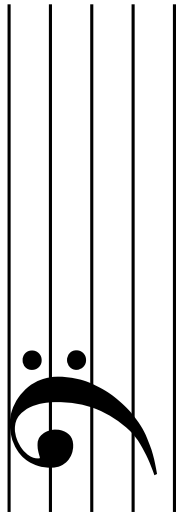

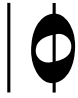

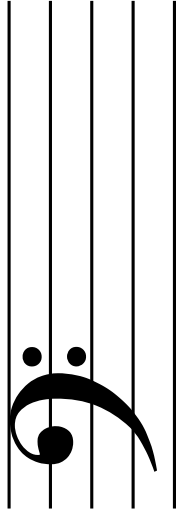

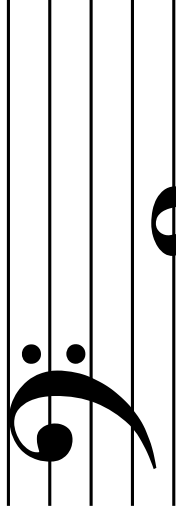



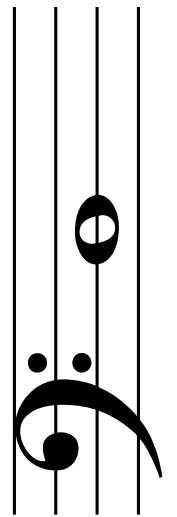
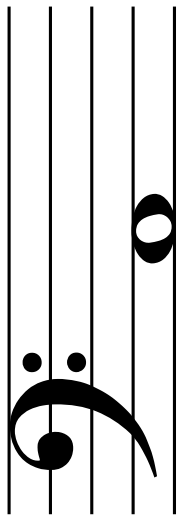
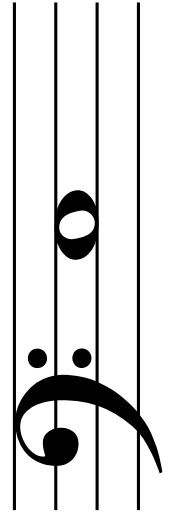
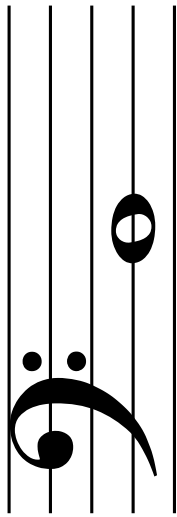
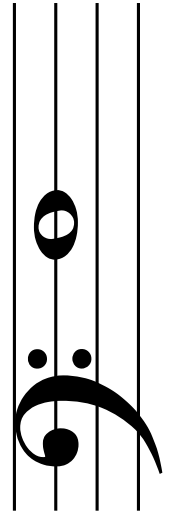
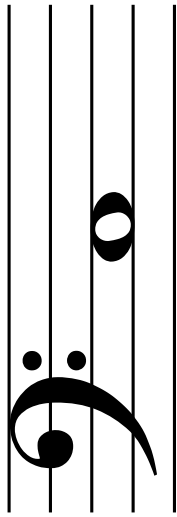
BASS CLEF
FLASH CARDS

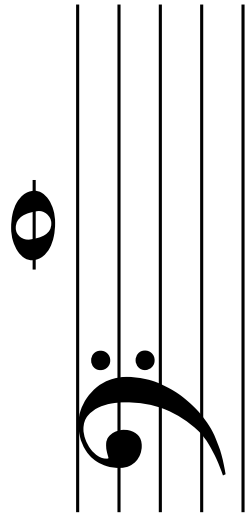
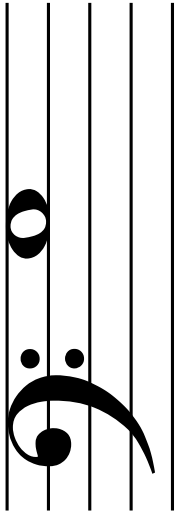
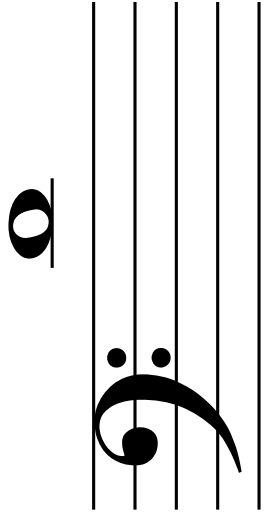
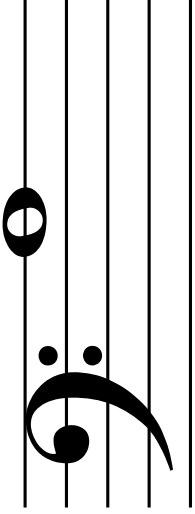
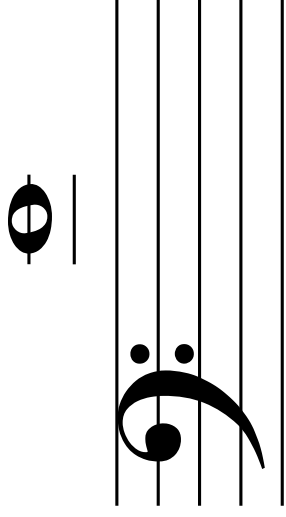
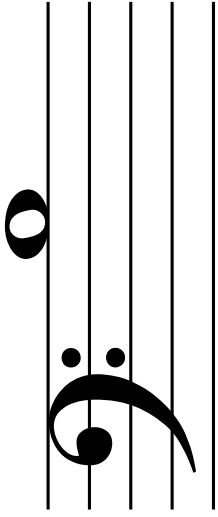


MakingMusicFun.net

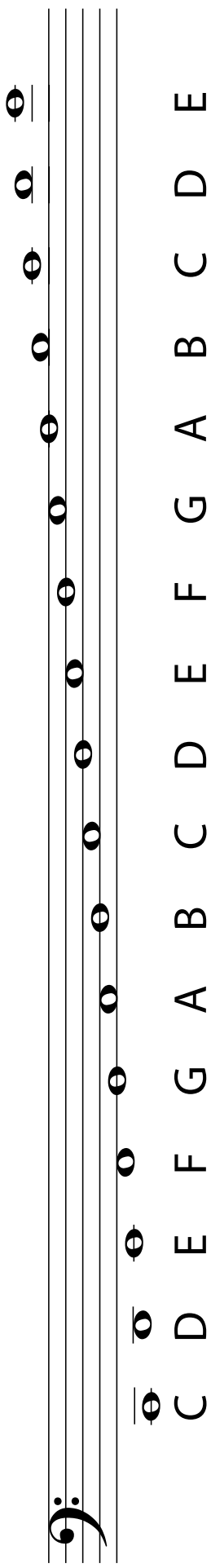
	
	





ANSWER KEY



A musical staff with a bass clef and a double bar line. The staff contains 15 quarter notes, each with a letter label below it. The notes and labels are: C (middle C), D (first line), E (first space), F (second line), G (second space), A (third line), B (third space), C (fourth line), D (fourth space), E (fifth line), F (first space), G (first line), A (first space), B (second line), and C (second space). The notes are positioned on the lines and spaces of the staff.

