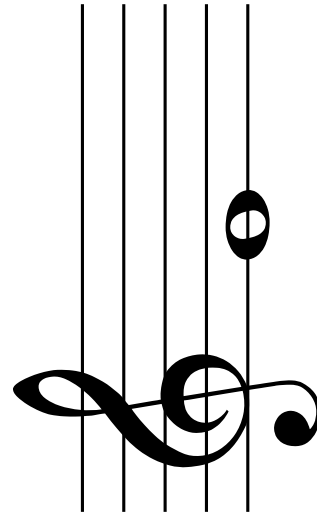
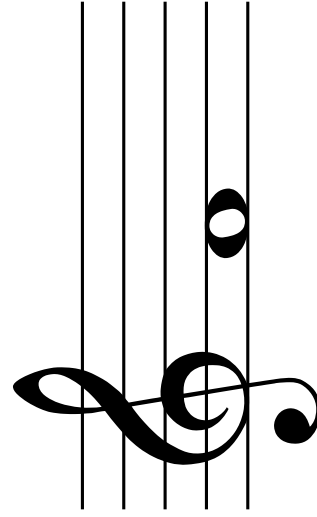
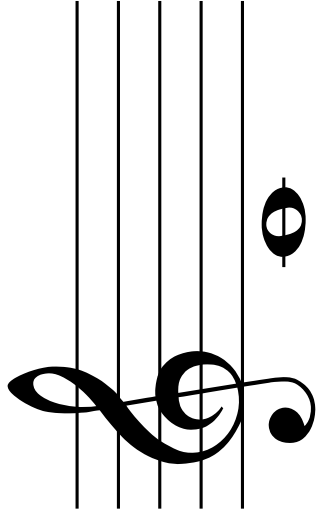
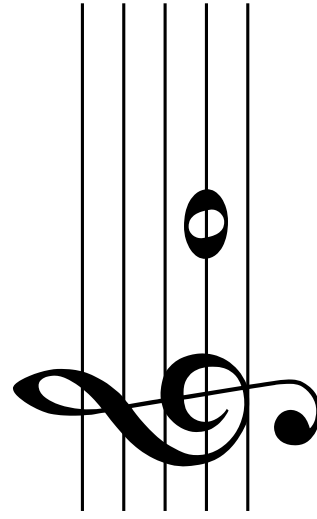
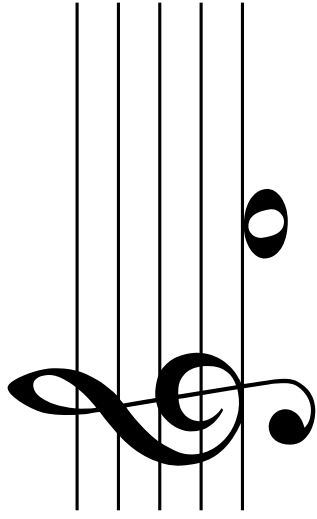
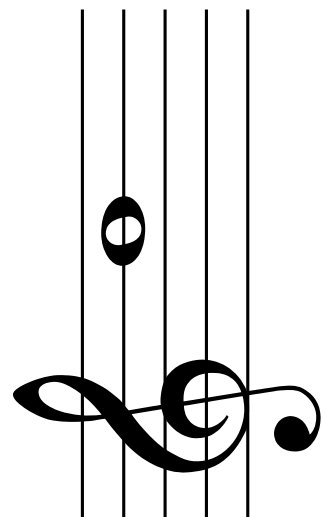
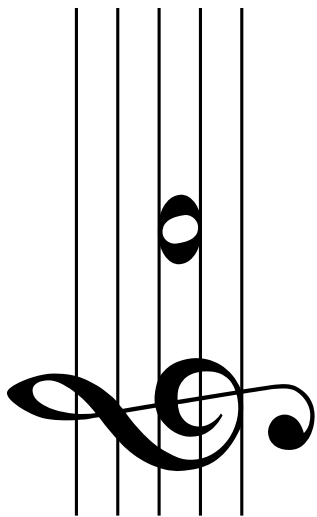
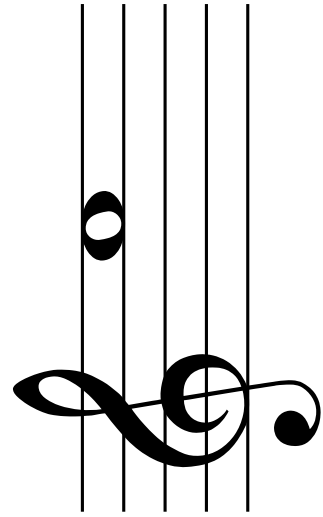
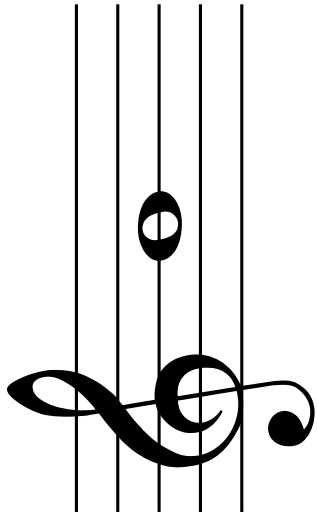
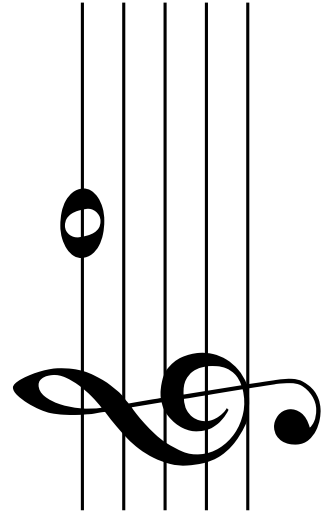
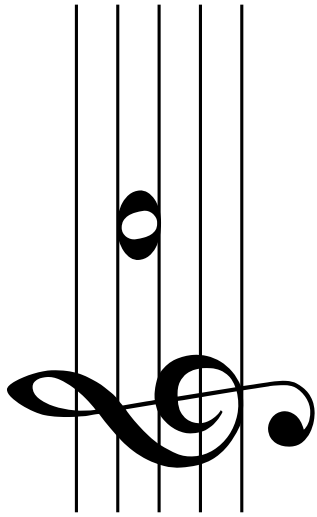


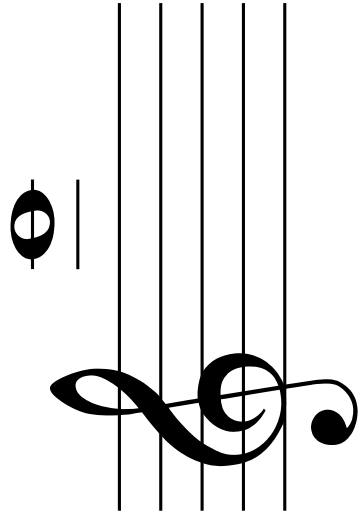
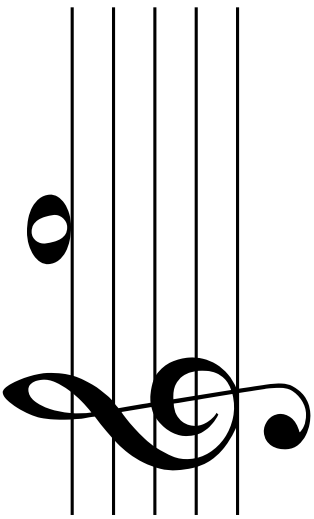
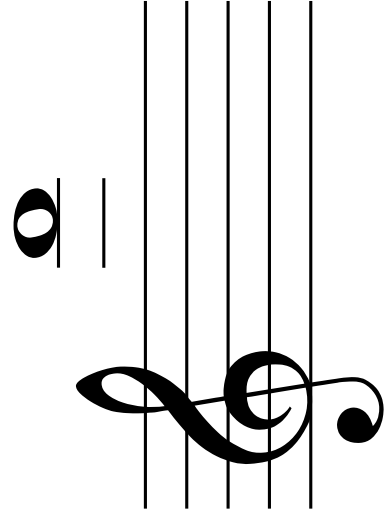
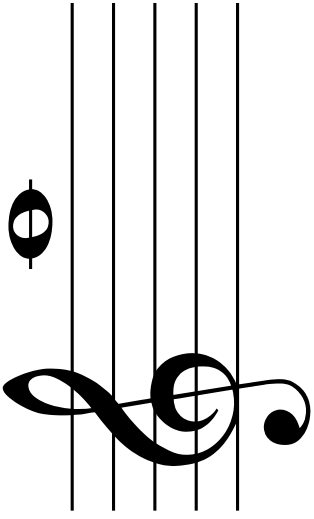
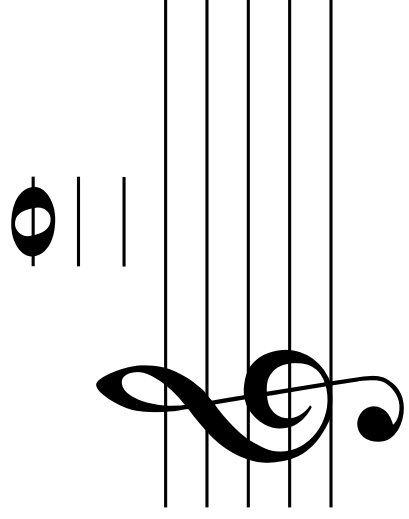
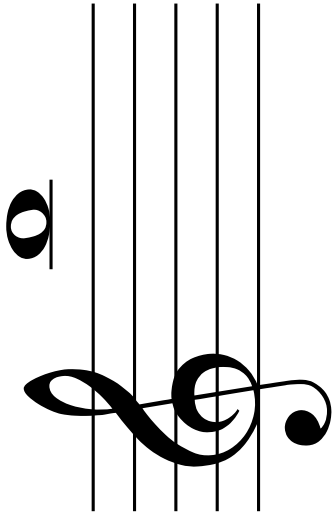
TREBLE CLEF
FLASH CARDS



MakingMusicFun.net







ANSWER KEY

A musical staff with a treble clef. The notes are placed on the lines and spaces of the staff as follows: C (first space), D (second line), E (third space), F (fourth line), G (fifth line), A (first space), B (second line), C (third space), D (fourth line), E (fifth line), F (first space), G (second line), A (third space), B (fourth line), C (fifth line), D (first space), E (second line).

C D E F G A B C D E F G A B C D E

