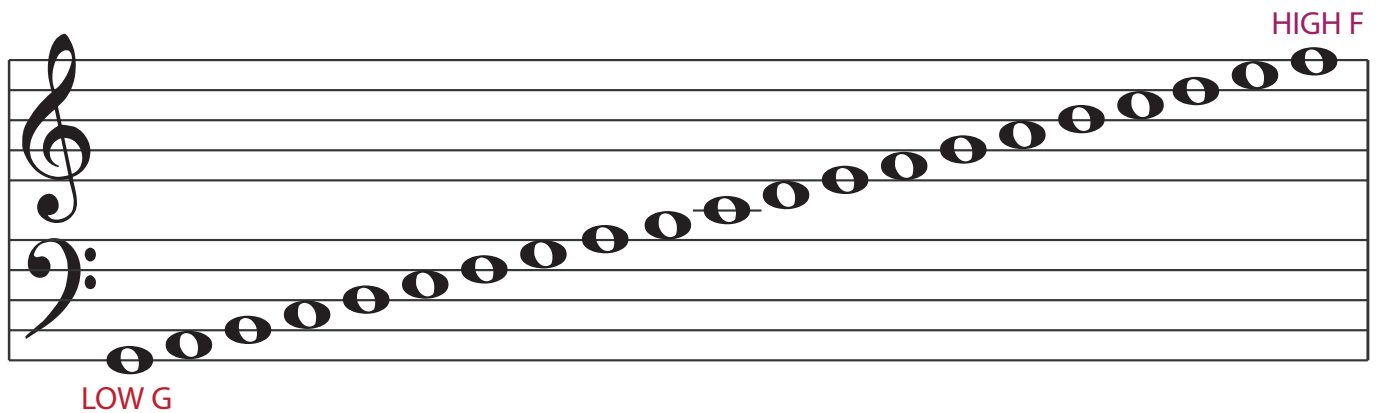
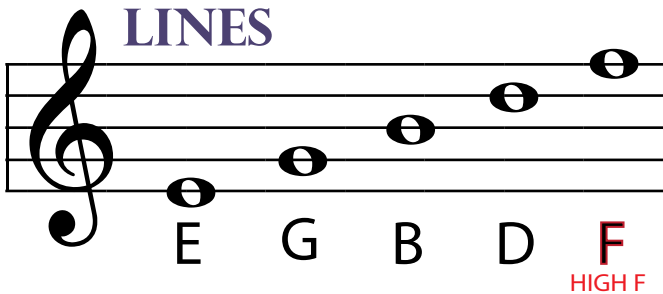


# The Grand Staff Notes

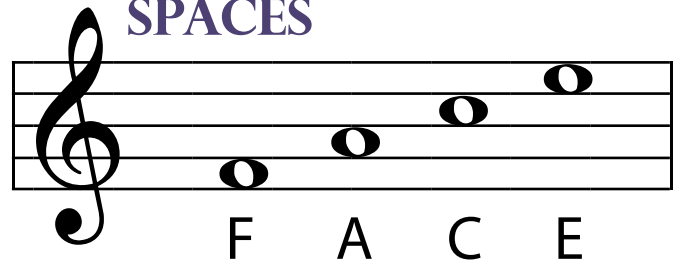
\*line/space/line/space\*



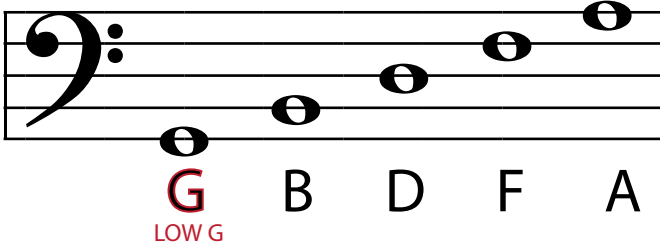
## TREBLE CLEF LINES



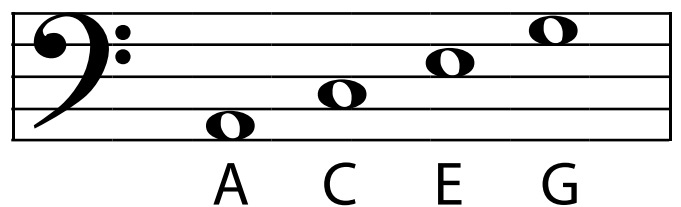
## SPACES



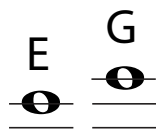
## BASS CLEF LINES



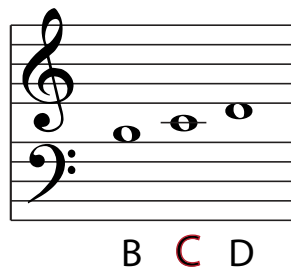
## SPACES



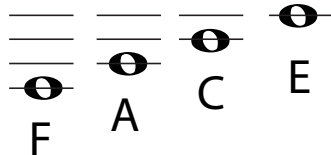
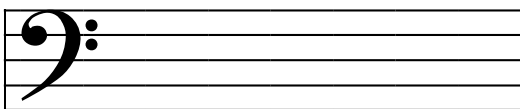
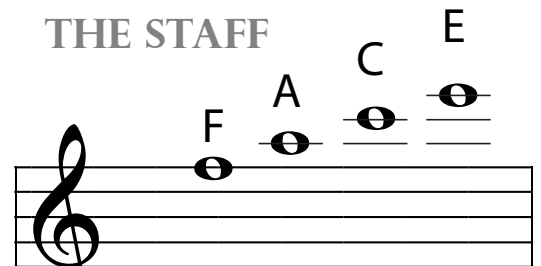
## INTO THE TREBLE (VISUALIZE)



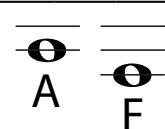
## IN BETWEEN TREBLE/BASS CLEF



## ABOVE THE STAFF

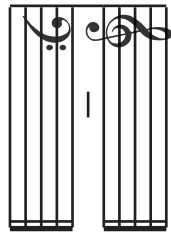
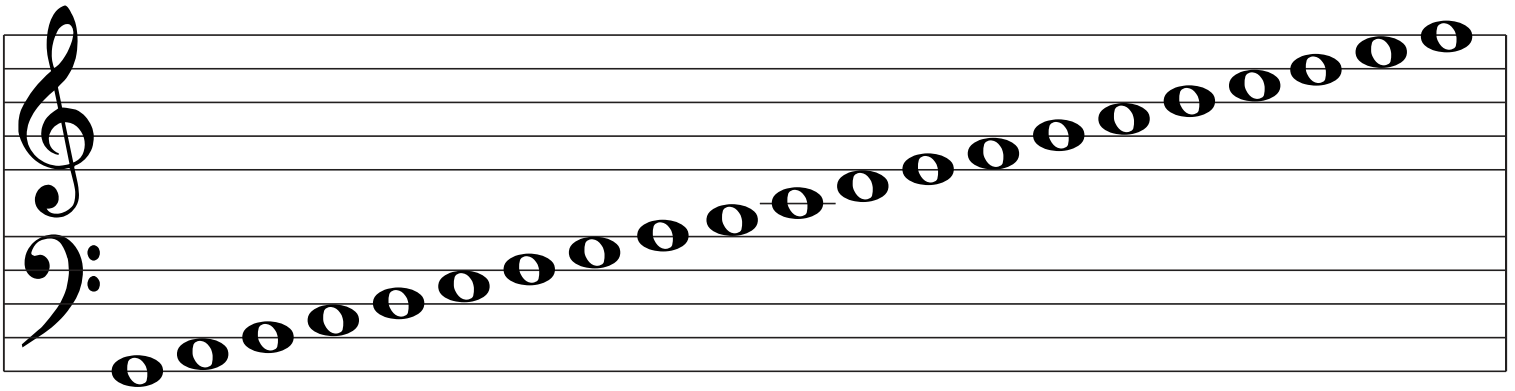


## INTO THE BASS (VISUALIZE)

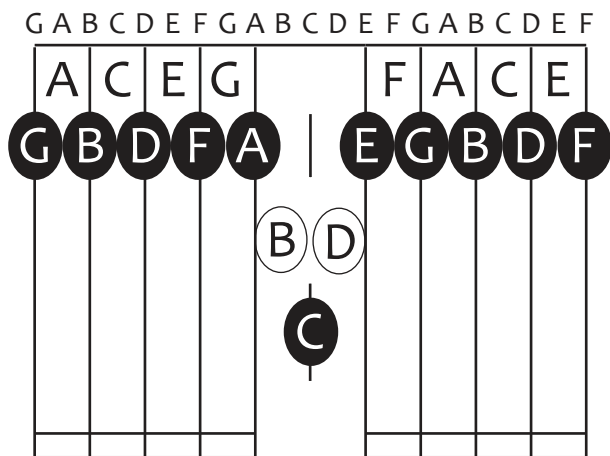
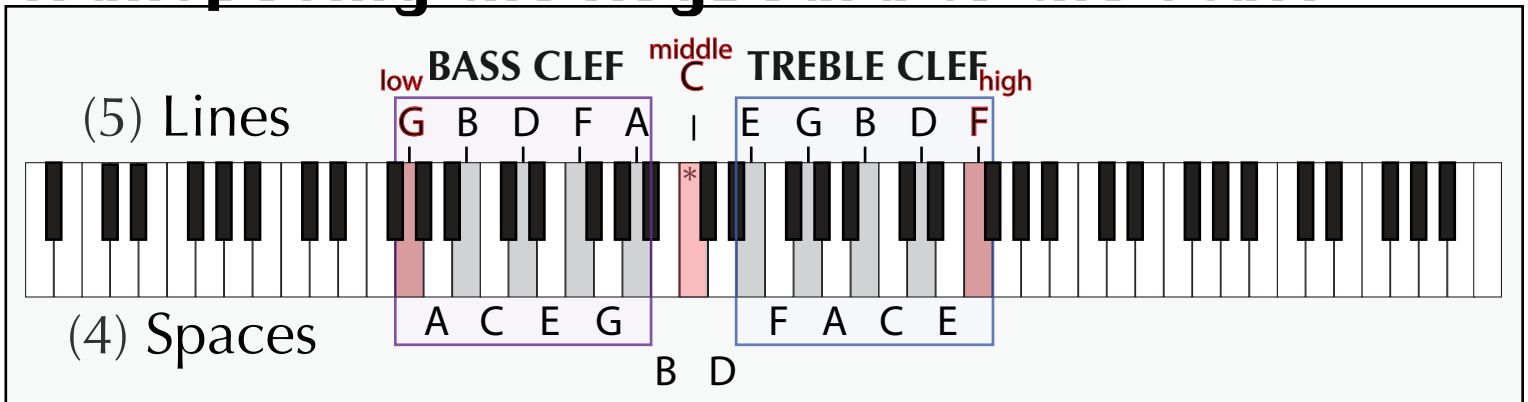


# Transposing the Staff

\*line/space/line/space\*



## Transposing the keyboard to the staff



# The Grand Staff Background

